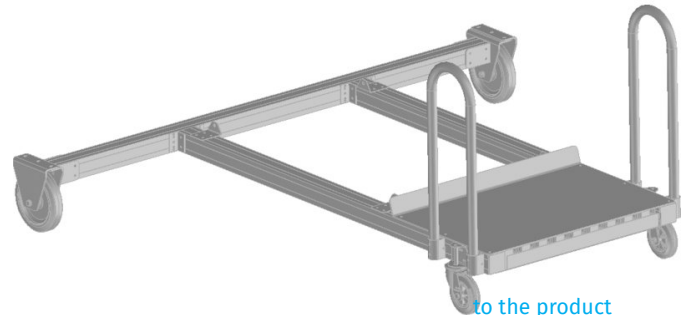


# Mandatory module - chassis

## Product description

- Two versions available, with sliding handles:
- Standard chassis with fixed-length stabiliser. Equipped with 2 swivel and 2 fixed castors with brake for mobility.
- Chassis with extendable stabilisers and adjustable foot plates (adjustment range 200 mm) for optimal stability and levelling out on uneven ground. Equipped with 2 swivel and 2 fixed castors with brake for mobility.



to the product



## Product variants

Order number	Transport dimensions	Weight
591010	2.370 mm × 2.335 mm × 1.025 mm	243.7 kg
591011	2.370 mm × 1.200 mm × 1.025 mm	279.6 kg