

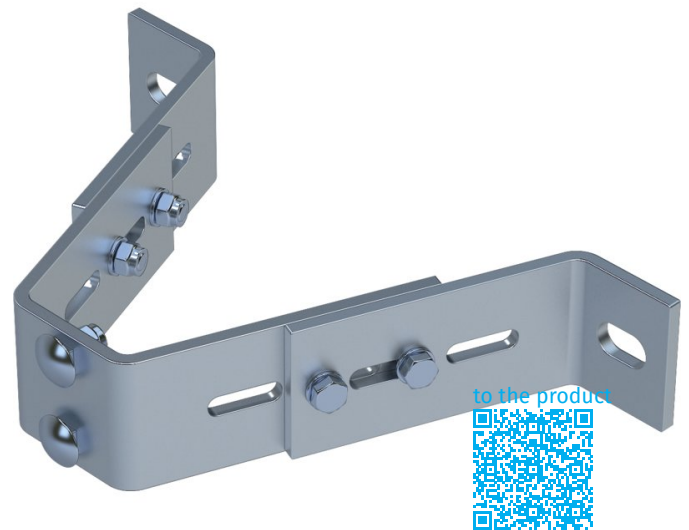
# Wall bracket, adjustable

## Product description

- Wall clearance can be adjusted from 120 mm to 180 mm.
- Suitable for arrester rails and single-stile ladders.
- Wall brackets are required at intervals of max. 1.12 m.

## Product features

Weight: 1.6 kg



## Product variants

Order number	Material
47538	Galvanised steel
47558	Stainless steel