

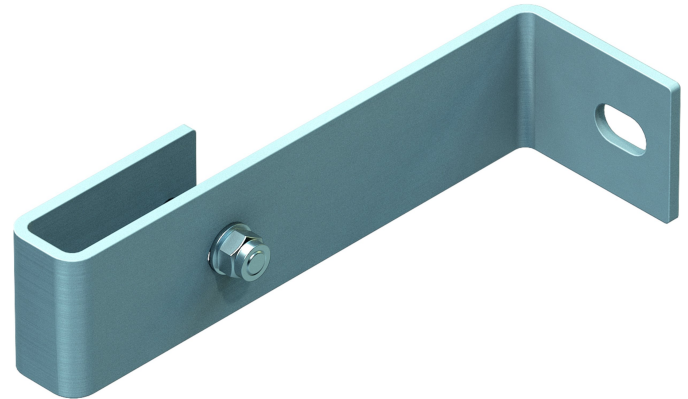
# Wall bracket, rigid

## Product description

- For 150 mm stand-off.
- 1 set = 2 pcs.

## Product features

Weight: 0.8 kg



## Hints and special features

2 sets of wall brackets are required for ladders with 4-9 rungs, 3 sets of wall brackets for ladders with 10-15 rungs, 5 sets of wall brackets for ladders with 16-24 rungs. 1 set = 2 pcs. (right/left). Attachment materials (dowels etc.) are not included in the scope of delivery.

## Product variants

Order number	Material	Suitable for
47301	Galvanised steel	Steel ladder
47304	Stainless steel	V4A ladder
47307	Stainless steel	GRP ladder