

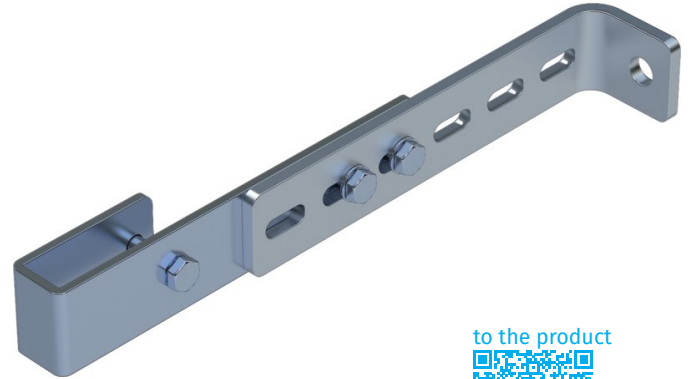
Wall bracket, adjustable

Product description

- Wall clearance can be adjusted from 150 mm to 300 mm.
- 1 set = 2 pcs.

Product features

Warranty: 10 years
Weight: 1.6 kg



Hints and special features

2 sets of wall brackets are required for ladders with 4-9 rungs, 3 sets of wall brackets for ladders with 10-15 rungs, 5 sets of wall brackets for ladders with 16-24 rungs.

1 set = 2 pcs. (right/left).

Attachment materials (dowels etc.) are not included in the scope of delivery.

Product variants

Order number	Material	Suitable for
47302	Galvanised steel	Steel ladder
47305	Stainless steel	V4A ladder
47308	Stainless steel	GRP ladder