

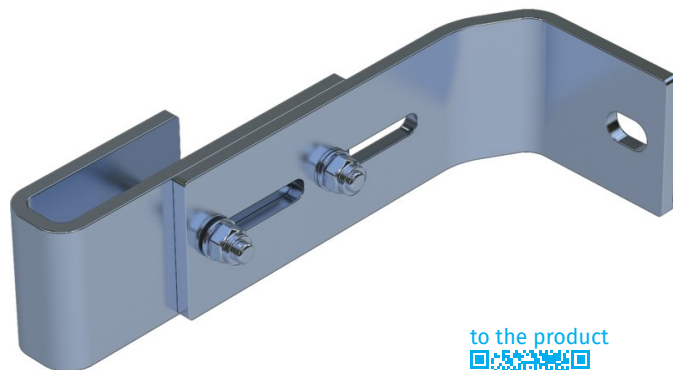
# Wall bracket, adjustable

## Product description

- Wall clearance can be adjusted from 150 mm to 190 mm.
- 1 set = 2 pcs.

## Product features

Warranty: 10 years  
Weight: 0.9 kg



to the product



## Hints and special features

2 sets of wall brackets are required for ladders with 4-9 rungs, 3 sets of wall brackets for ladders with 10-15 rungs, 5 sets of wall brackets for ladders with 16-24 rungs.

1 set = 2 pcs. (right/left).

Attachment materials (dowels etc.) are not included in the scope of delivery.

## Product variants

Order number	Material	Suitable for
47314	Galvanised steel	Steel ladder
47315	Stainless steel	V4A ladder
47316	Stainless steel	GRP ladder