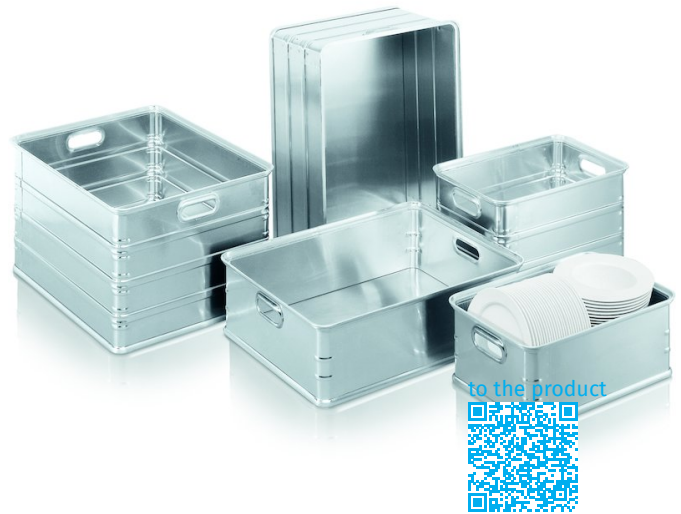


K 270 transport containers

For protected storage and safe transport - at any temperature.

Product description

- Universal container with ergonomic cut-out handles for safe storage and transportation at any temperature.
- Designed for standard pallet dimensions according to DIN 15 141.
- Can be used on roller conveyors and conveyor belts.
- High durability due to edge and bottom frames made of solid profiles that are fully welded together at their joints.
- Optional coding labels for assigning destination.
- Universal aluminium container.
- Edge and base profile frames made of solid profile sections.
- Fully welded joints between profile sections.
- Ergonomic handles at either end.
- Coding strips for destination management are available.



Product features

Corner beading: Yes
 Material: aluminium
 Peripheral beading: Yes

Product variants

Order number	Internal dimensions L x W x H	Outside dimensions L x W x H	Volume	Weight
40551	720 mm x 540 mm x 400 mm	760 mm x 580 mm x 425 mm	155 l	5.3 kg
40552	720 mm x 540 mm x 300 mm	760 mm x 580 mm x 325 mm	117 l	4.6 kg
40553	720 mm x 540 mm x 200 mm	760 mm x 580 mm x 225 mm	77 l	4.2 kg
40554	540 mm x 340 mm x 300 mm	580 mm x 380 mm x 325 mm	55 l	3 kg
40555	540 mm x 340 mm x 200 mm	580 mm x 380 mm x 225 mm	37 l	2.5 kg