

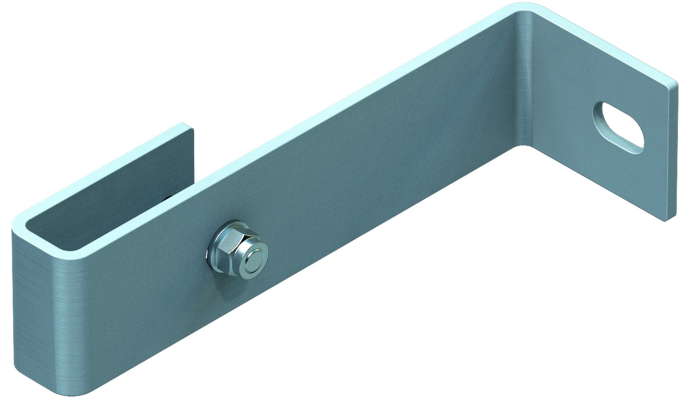
Wall bracket, rigid

Product description

- For 150 mm stand-off.
- 1 set = 2 pieces.

Product features

Weight: 0.8 kg



Hints and special features

2 sets of wall brackets are required for ladders with 4–9 rungs, 3 sets of wall brackets for ladders with 10–15 rungs, 5 sets of wall brackets for ladders with 16–24 rungs. 1 set = 2 pieces (right/left). Attachment materials (dowels etc.) are not included in the scope of delivery.

Product variants

Order number	Material	Suitable for
47301	Galvanised steel	Steel ladder
47304	Stainless steel	V4A ladder
47307	Stainless steel	GRP ladder