

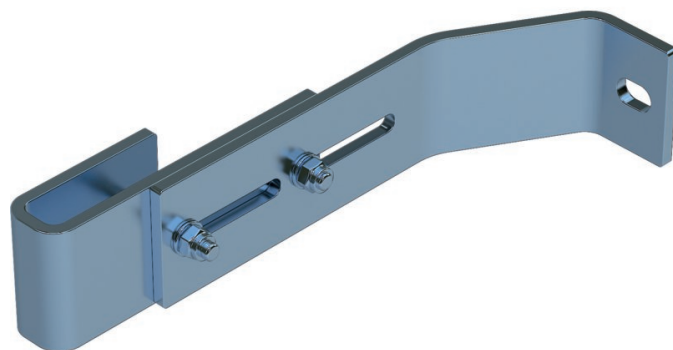
# Wall bracket, adjustable

## Product description

- Adjustable for wall clearances from 200 to 250 mm.
- 1 set = 2 pieces.

## Product features

Material: Stainless steel  
 Warranty: 10 years  
 Weight: 1.6 kg



## Hints and special features

2 sets of wall brackets are required for ladders with 4–9 rungs, 3 sets of wall brackets for ladders with 10–15 rungs, 5 sets of wall brackets for ladders with 16–24 rungs.  
 1 set = 2 pieces (right/left).  
 Attachment materials (dowels etc.) are not included in the scope of delivery.

## Product variants

Order number	Suitable for
47610	V4A ladder
47611	GRP ladder