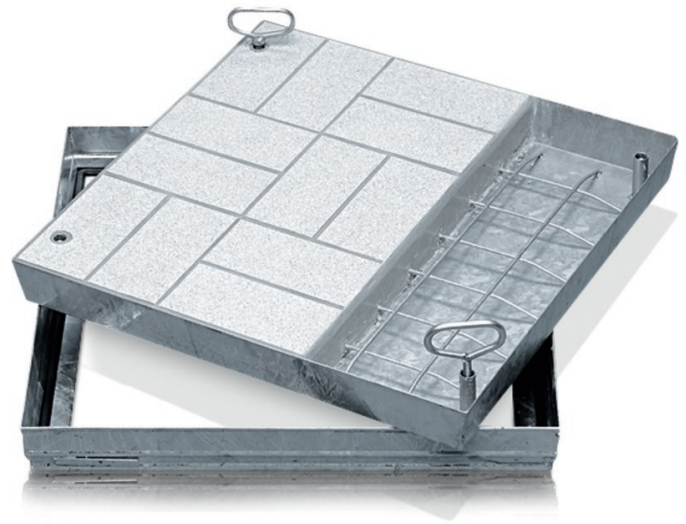


Galvanised steel shaft covers with cover trough - 47037

Shaft covers that can be walked or driven on, with customisable inner and outer surface.

Product description

- Compliant with DIN EN 124 in conjunction with DIN 1229.
- Tapering section design, therefore easy to open. No sticking.
- Easy to open, no jamming.
- Odour-tight and impervious to surface water.
- Load with choice of surface: test force 125 kN (=12.5 t), only after cover trough has been filled by customer with B 45 concrete (grain 0-8).
- Incl. lift-out handles (pair) made from stainless steel, comprising one self-lifting opening handle and one lift-out handle.
- Trough depth 80 mm (of which 40 mm covered with construction steel grating and 40 mm free area)



Product features

Design height: 90 mm
 Inside shaft length: 1000 mm
 Inside shaft size: 1.000mm × 600mm
 Inside shaft width: 600 mm
 Material, cover: Steel, galvanised
 Material, frame: Steel, galvanised
 Outside dimensions L x W x H: 1.120 mm × 720 mm
 Transport dimensions: 1.120 mm × 720 mm × 90 mm
 Trough depth: 80 mm