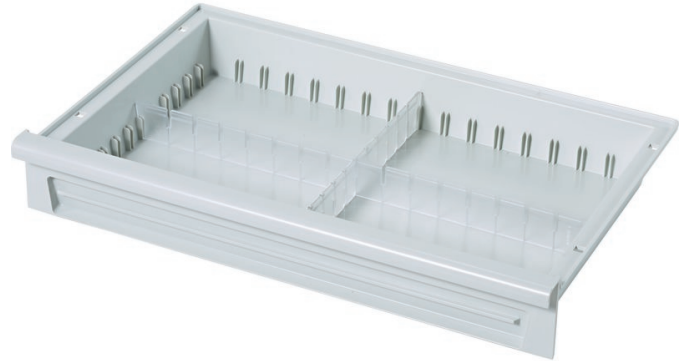


# Modular drawers in ABS

## Product description

- Made from acrylonitrile butadiene styrene (ABS), light grey.
- Capable of withstanding temperatures of up to 85°C.
- Sealed floor provides reliable protection against spilled liquids, dust and dirt particles.
- Can be subdivided as required using lengthwise and crosswise dividers.
- Designed for fitting in a support wall and on telescopic rails and for drawer stop.
- Designed for attachment of label holders.



## Product variants

Order number	Dimensions	Length	Weight	Width
46206	600 mm × 400 mm × 245 mm	600 mm	2.1 kg	400 mm
46205	600 mm × 400 mm × 145 mm	600 mm	1.8 kg	400 mm
46209	400 mm × 600 mm × 245 mm	400 mm	2.1 kg	600 mm
46208	400 mm × 600 mm × 145 mm	400 mm	1.8 kg	600 mm
46204	600 mm × 400 mm × 95 mm	600 mm	1.7 kg	400 mm