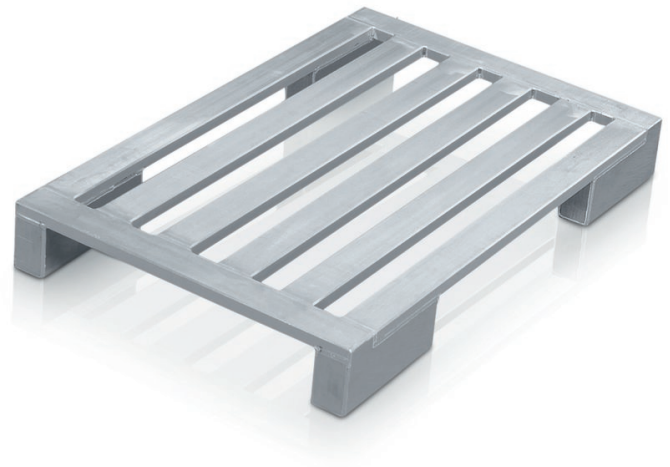


# Aluminium flat pallet with long corner feet

Hygienic pallet, sturdy and suitable for use on roller conveyors.

## Product description

- Hygienic pallet, sturdy and suitable for use on roller conveyors.
- Frame and longitudinal members made of sealed, heavy-duty, corrosion-resistant aluminium sections.
- Extra-long corner feet (L = 300 mm) combine the advantages of skid undercarriage and corner feet. They are for example suitable for roller conveyors and high bay warehouses.
- Plenty of space to accommodate forklift arms. No full-length skid to get in the way, hence less risk of damage.
- Seams welded watertight.



## Product features

Length: 1200 mm  
Load capacity: 1000 kg  
Material: Aluminium

## Product variants

Order number	Dimensions	Number of rungs	Weight	Width
45175	1.200 mm × 800 mm × 150 mm	4	12.3 kg	800 mm
45185	1.200 mm × 1.000 mm × 150 mm	5	13.9 kg	1000 mm